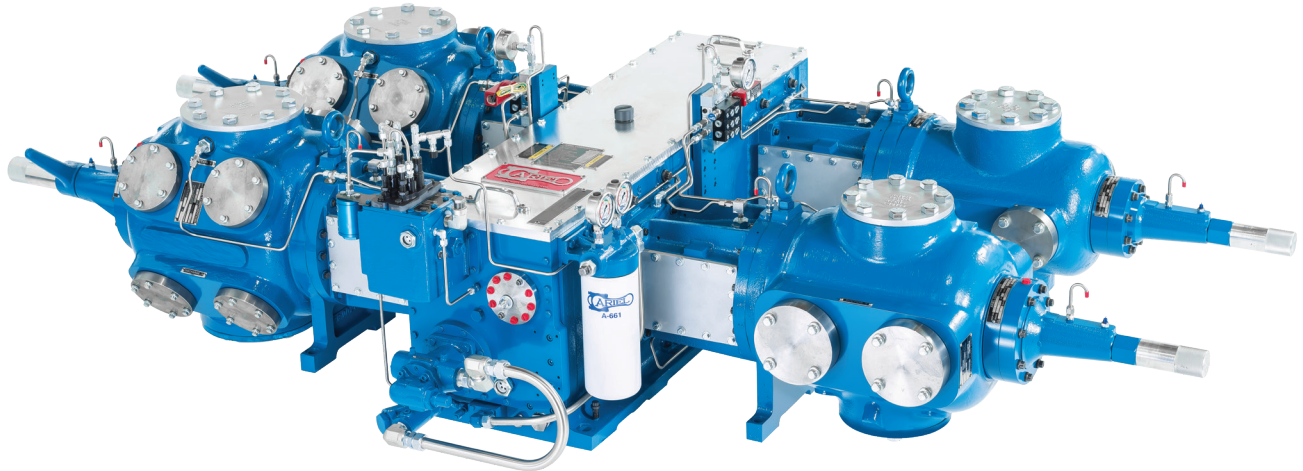


ARIEL CORPORATION

JG/JGA



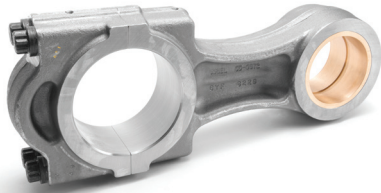
WORLD STANDARD
COMPRESSORS



	JG		JGA		
	2	4	2	4	6
Number of Throws	2	4	2	4	6
Rated Power (BHP)	252	504	280	560	840
Rated Power (kW)	188	376	209	418	626
Stroke (in)	3.5		3.0		
Stroke (mm)	89		76		
Maximum RPM	1,500		1,800		
Piston Speed (FPM)	875		900		
Piston Speed (m/s)	4.45		4.57		
Total Rod Load (lbs)	18,000		20,000		
Total Rod Load (kN)	80		89		
Rod Load Tension (lbs)	9,000		10,000		
Rod Load Tension (kN)	40		44		
Rod Load Compression (lbs)	10,000		11,000		
Rod Load Compression (kN)	44		49		
Rod Diameter (in)			1.125		
Rod Diameter (mm)			29		
Crankshaft Centerline, from bottom (in)			10.25		
Crankshaft Centerline, from bottom (mm)			260		

FEATURES

The JG and JGA are medium-sized, driver-rated separable reciprocating compressors utilized in gas gathering, fuel-gas boosting, underbalanced drilling and CNG applications.



Rigid Conrod with bronze bushing



Application-Specific Efficient Valves



Rugged one-piece Crosshead



Ariel "necked-down" piston rod design

Precision Bearing Shells:

Every Ariel compressor features precision-machined compact tri-metal main and connecting rod bearings.

Versatile Unloading Devices:

Ariel offers manual, head-end variable volume clearance pockets on most cylinders. Pneumatic suction valve un-loaders are available on a limited basis.

Efficient Valving:

Plate-type valves are designed for modern speeds, utilizing non-metallic sealing elements as standard. Valves are selected to comply with established low-valve velocity standards.

Heavy-Duty Crankshafts:

The JG/JGA compressors feature forged steel, precision-machined crankshafts with integral counter-weights manufactured by Ariel Corporation.

High-Efficiency Spin-On Oil Filters:

Ariel JG/JGA compressors feature high-efficiency non-bypassing spin-on oil filters rated at 5 micron nominal and 17 micron absolute.

Rugged Crankcases:

Ariel crankcases are designed for long service life and ease of access during maintenance and feature heavily-ribbed, high-strength cast iron base with a removable lightweight aluminum top cover.

Full-Pressure Lubrication:

A frame-driven lube oil pump provides cooled oil through a full-flow oil filter to all moving parts in the frame. A divider-block system supplies metered oil to cylinder bores and rod packings.

High-Strength Bolting:

Durable Grade 8 bolting on all loaded joints combined with specially designed fatigue-fighting bolts on all valve caps ensure ultimate holding strength.

Rigid Connecting Rods:

The JG/JGA compressors feature durable connecting rods manufactured from forged steel with 4 bolts and a heavy-duty "I" section.

Rugged Crossheads:

One-piece, long-life crossheads with hardened, ground steel crosshead pins and direct, full-pressure lubrication at the top and bottom for minimum wear.

Innovative Cylinders:

Ariel's single and double-acting non-cooled cylinders eliminate the cost and maintenance associated with water cooling.

Durable Piston Rods:

JG/JGA compressors feature wear-resistant ductile or gray iron pistons and precision-ground alloy steel piston rods with locking crosshead nuts. Rolled threads are 1/4" under rod diameter for easy installation.

Ariel Response Center | P: (888) 397-7766 | arc@arielcorp.com