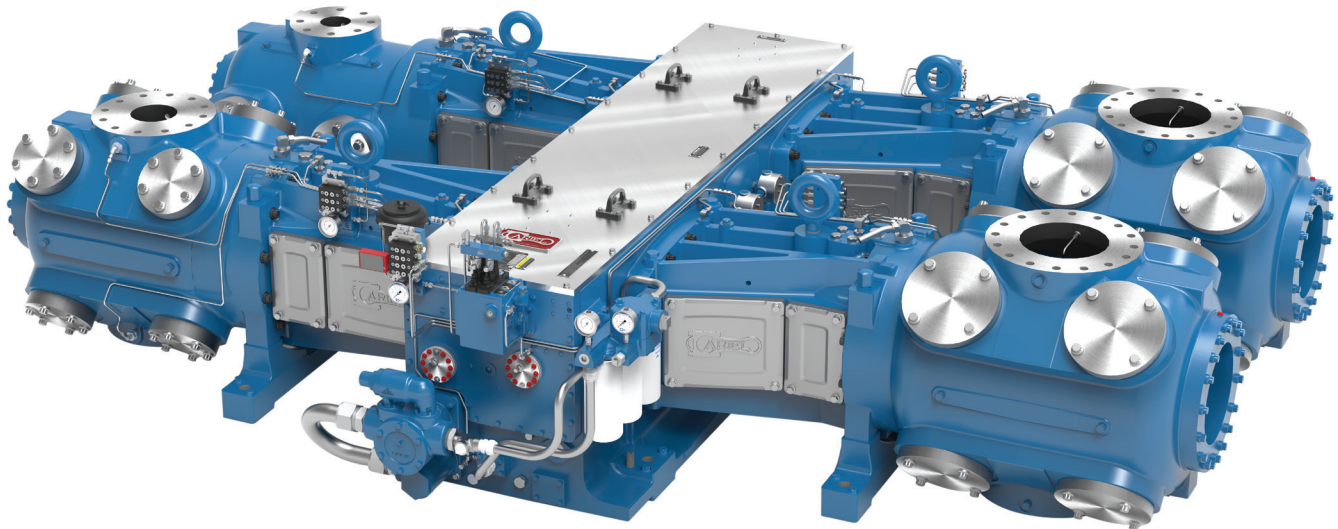


# ARIEL CORPORATION

## KBK / KBT



WORLD STANDARD  
COMPRESSORS



	KBK			KBT		
Number of Throws	2	4	6	2	4	6
Rated Power (BHP)	1,840	3,680	5,520	1,840	3,680	5,520
Rated Power (kW)	1,372	2,744	4,116	1,372	2,744	4,116
Stroke (in)	6			5		
Stroke (mm)	152.4			127		
Maximum RPM	1,200			1,500		
Piston Speed (FPM)	1,200			1,250		
Piston Speed (m/s)	6.10			6.35		
Total Rod Load (lbs)	92,000					
Total Rod Load (N)	409,236					
Rod Load Tension (lbs)	46,000					
Rod Load Tension (N)	204,618					
Rod Load Compression (lbs)	50,000					
Road Load Compression (N)	222,411					
Rod Diameter (in)	2.0					
Rod Diameter (mm)	51					
Crankshaft Centerline, from bottom (in)	17					
Crankshaft Centerline, from bottom (mm)	432					