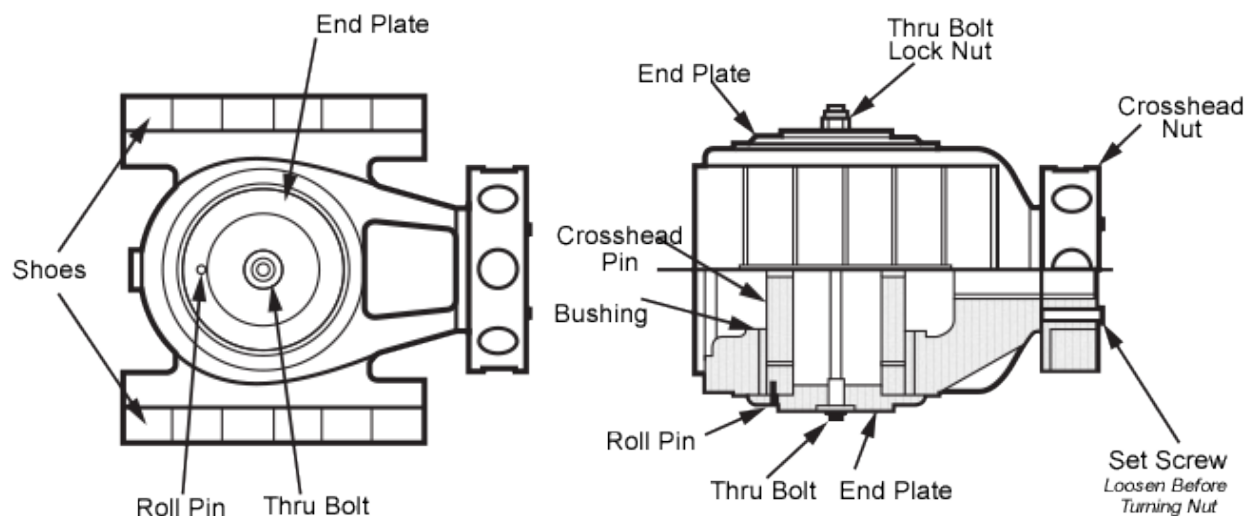


Crossheads

Ariel uses one piece crossheads with full top and bottom lubrication. Crossheads are ductile iron with babbitted sliding surfaces, except for the JGM and JGP which are gray iron without babbitted surfaces. Heavier crossheads, used to balance larger opposing weights, can be provided in bronze.



Full floating alloy steel crosshead pins are used in Ariel frames; all frames except for the JGM, JGP, and JGH have bronze crosshead pin bushings.

Inadequate rod load reversal can result in lack of lubrication to the crosshead pin and consequent failure.

Crossheads and crosshead nuts of varying weight are available to facilitate proper frame balance. [Balance crossheads](#) are available to balance opposite blank throws.